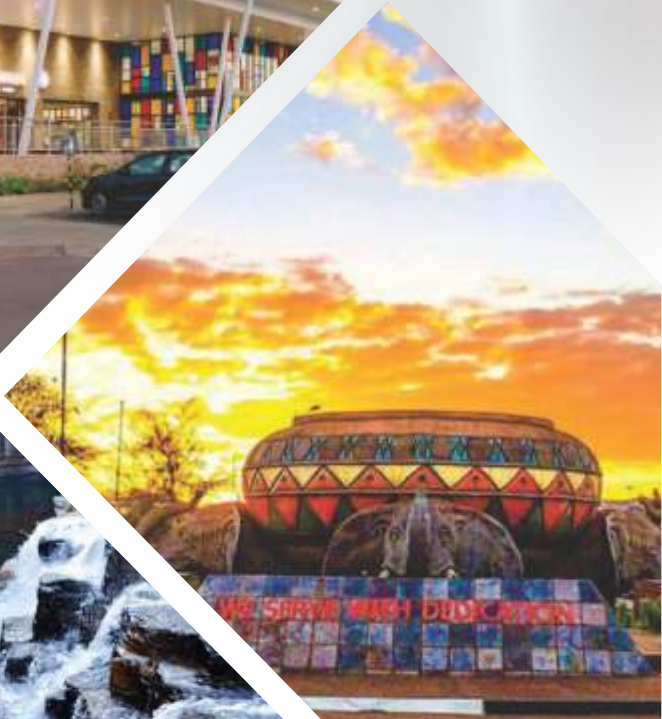




**THULAMELA
MUNICIPALITY**
www.thulamela.gov.za



THULAMELA VISITOR'S GUIDE

TABLE OF CONTENTS

- LET'S EXPLORE THULAMELA
- THULAMELA MAP
- TOWN & MALLS
- HIGHER LEARNING INSTITUTIONS
- TOURISM IN THULAMELA "TOURISM SITES"
- TOURISM IN THULAMELA "HOTELS & CONFERENCING"
- LIST OF GUESTHOUSES AND BED AND BREAKFAST
- WHERE CAN YOU EAT IN THULAMELA ?
- WHERE CAN YOU ENTERTAIN YOURSELF
- FARMING IN THULAMELA "FRESH PRODUCE"
- LIST OF AGRICULTURAL PROJECTS
- TRANSPORT COMPANIES IN THULAMELA
- OTHER SMMEs IN THULAMELA
- SPA & SALON
- CAR RENTAL
- CULTURAL ACTIVITIES
- SPORT ACTIVITIES
- ANNUAL EVENTS

LET'S EXPLORE THULAMELA



THULAMELA MUNICIPALITY

MUNICIPAL AND DEMOGRAPHIC PROFILE OF THE MUNICIPALITY MUNICIPAL AND DEMOGRAPHIC PROFILE OF THE MUNICIPALITY THULAMELA MUNICIPALITY PROFILE

Thulamela Municipality is a Category B municipality established in terms of Local Government Structures Act number 117 of 1998. Thulamela Municipality is one of the four local municipalities comprising Vhembe District Municipality. Thulamela Municipality shares the boundary in the south east with Collins Chabane Municipality while sharing the border's with Musina Municipality in the north east and Makhado Municipality in the west. Thulamela covers 2 893.936 km²: 22° 57' S 30° 29' E Thulamela Municipality is a municipality area covering vast track of lands mainly tribal, and Thohoyandou is its political, administrative and commercial centre. In terms of population it is the second largest of all the municipalities in Limpopo Province.

The political leadership of the municipality is vested in the Municipal Council comprising of 81 Councillors of whom 41 are Ward or directly elected Councillors, 40 Proportional Representative (PR), representing political parties on the strength of their performance in the August 2016 Local Government Elections. Municipal Code is LIM 343. The Mayor chairs Executive Committee meetings, while the Speaker presides over Council meetings. Additional members of Council are 7 Senior Traditional Leaders or their representatives who sit on the Council as Ex-Officio representing the traditional systems of governance. There are 6 Departments that form the basis of Administration. Administration is responsible for strategic day to day operational matters of the municipality, implementation of Council's decisions, as well as providing technical, professional support and advice to the Council.

Vision 2030

Finally, we still maintain our plans to achieve a City status by the Year 2030 by promoting urban regeneration and comprehensive rural development whilst encouraging Local Development to improve the quality of lives of our people. The responsibilities to re-build our economy post COVID 19 rest among us all. We must do more to restore our lives and our economy. I encourage every citizen of Thulamela to be there to participate in the reconstruction and development of this beautiful country. We thank you all.

VISION AND MISSION

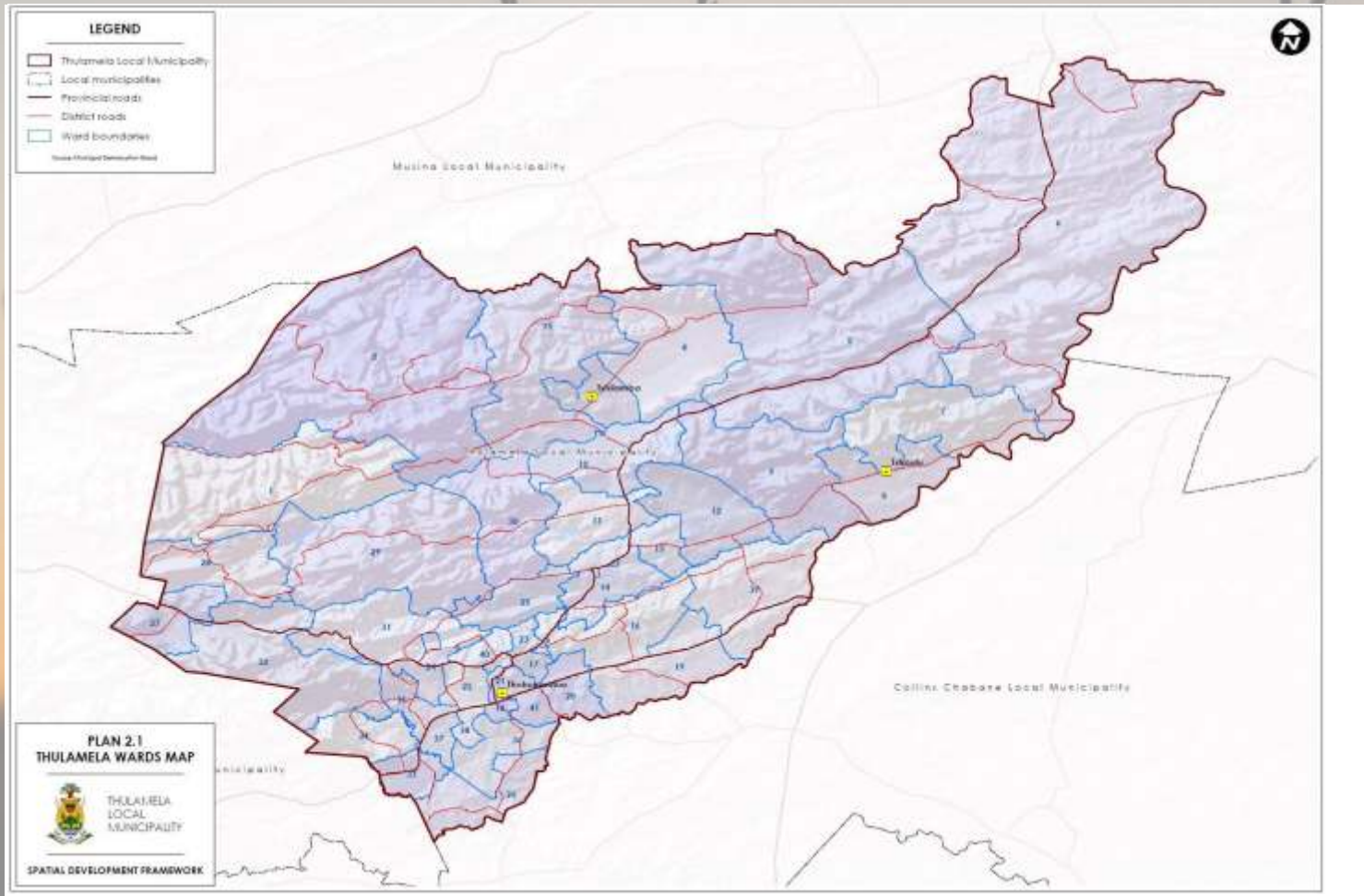
Thulamela Vision

We, the people of Thulamela would like our Municipality to Achieve a city status by 2030, to promote urban regeneration and comprehensive rural development whilst encouraging Local Economic Development to improve the quality of lives of our People.

Thulamela Mission

We build prosperity, eradicate poverty and promote social, political and economic empowerment of all our people through delivery of quality services, community participation, local economic development and smart administration Motto We serve with dedication.

Thulamela Map





Tourism in Thulamela “Tourism Sites”

TSHATSHINGO POTHOLES



TSHATSHINGO POTHOLES

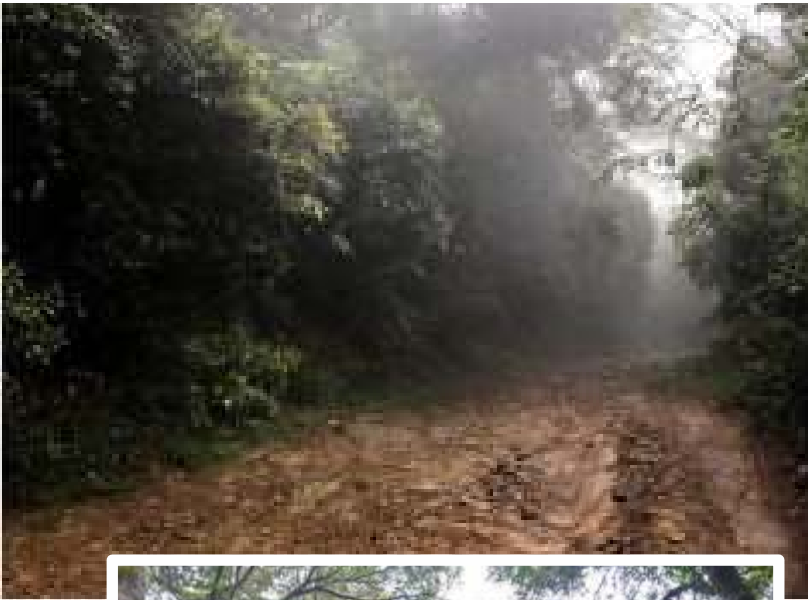


Tshatshingo Pothole which occurs in a geologically deep gorge along the Tshirovha River, is a gigantic whirlpool approximately 15m in diameters. There are three other giant sinkholes in the same location. The Pothole is of significant heritage to the Vha-Venda people in general
Address: Tshidzivhe, Makwarani Village Thohoyandou, 0950

Thohoyandou Adventures



Tshirovha Falls



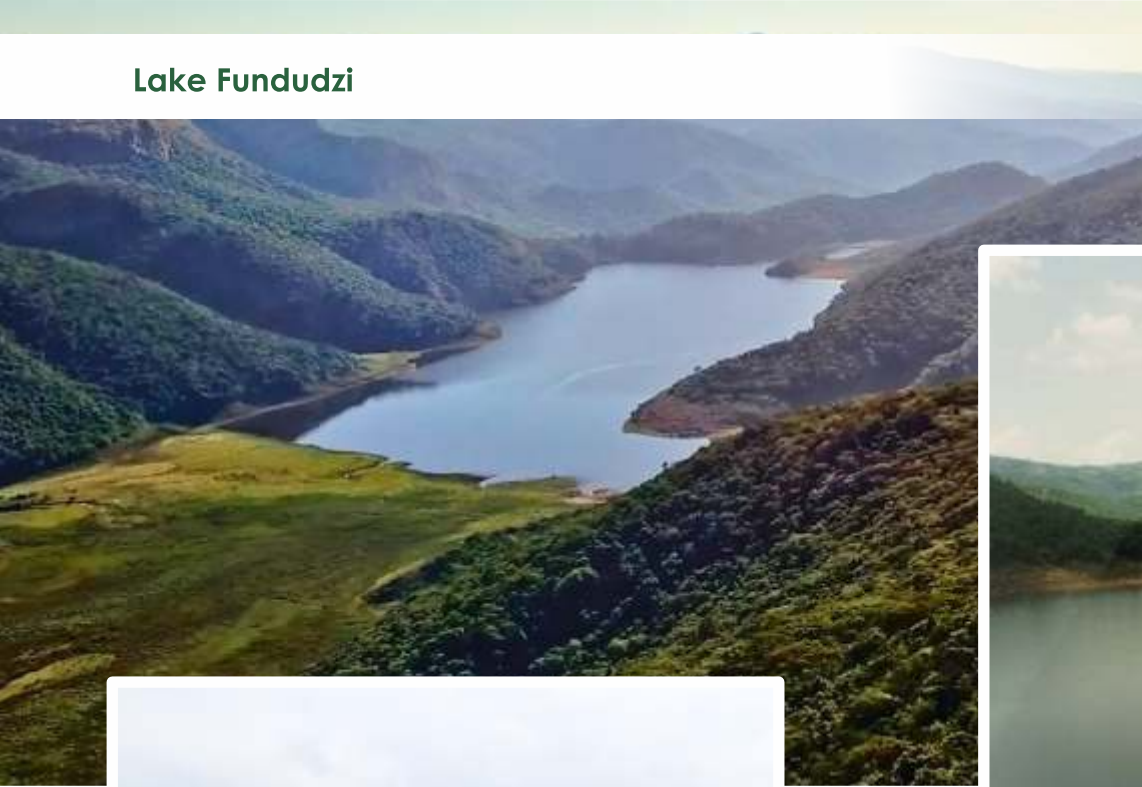
Experience the most majestic and beautiful forest in the Limpopo region, Explore the indigenous forest that incorporates the sacred burial ground of the chiefs of Thathe clan. Thathe Vondo is bursting with life, from giant hardwood and yellowwood trees, fern, thick undergrowth, creepers, through to species of birds. A great place for birds watching, bird species found around Thathe Vondo Forest includes white-starred robin, chorister robin chat, Knysna turaco, yellow-streaked greenbul and orange ground-thrush.

Phiphidi Water Falls



The vhaVenda clans of northern South Africa, in present-day Limpopo Province, are among the nation's most traditional, hewing to rituals and practices passed down from their ancestors. Among these clans, the Ramunangi are acknowledged as the traditional custodians of Phiphidi Waterfall, a small cascade that is central to the clan's relationship with ancestral spirits. This custodial responsibility, however, is not legally recognized, which has limited the Ramunangi's ability to protect their sacred site from tourism development.

Lake Fundudzi



Lake Fundudzi a.k.a. Lake Funduzi is located in the Soutpansberg in the Limpopo Province of South Africa. Measuring about 5 km by 3 km when full, it was created by an ancient landslide blocking the course of the Mutale River. The lake and its resident crocodiles as well as the nearby forest of Thathe Vondo, are regarded as sacred by the Vhatavhatsindi, the People of the Pool who are part of the Venda people.

Nandoni River View



At Nandoni River view we offer a specialised service with a personal touch that will make your event a regal experience. With professional co-ordinators to assist you from the very beginning until the last minute of your function, you can be assured that you will receive nothing but the best care and attention.

Address: Mutoti, Thohoyandou
Phone: 015 004 0433

Kalahari Waterfront



Kalahari Waterfront Nandoni Venda, Thohoyandou Budeli

Phone. +27 15 963 1529
Cell: +27 76 971 9525 / +27 63 347 2275
Whatsapp: +27 79 531 0708
Mail. info@kalahariwaterfront.co.za

Tshivhase Tea Estates



Location and Extent of Production—Mukumbani Tea Estate and 500ha est1982 through clones—Tshivhase Tea estate and 577ha est1973 through seedlings

Place Types : Point Of Interest, Establishment

Address : Thohoyandou, South Africa

Coordinate : -22.9608433, 30.3533792

What3Words: rationed . separately . honest

Phone : +27 15 963 8400

Thathe Forest



Acting Site for Muvhango Soapies

Thulamela Municipality Contact

**Physical Address: Thohoyandou Civic Centre,
Old Agriven Building, Thohoyandou**

**Postal Address: Private Bag X5066,
Thohoyandou, 0950**

Tel: 015 962 7500

Fax: (015) 962 4020

Email: web@thulamela.gov.za

Website: www.thulamela.gov.za